




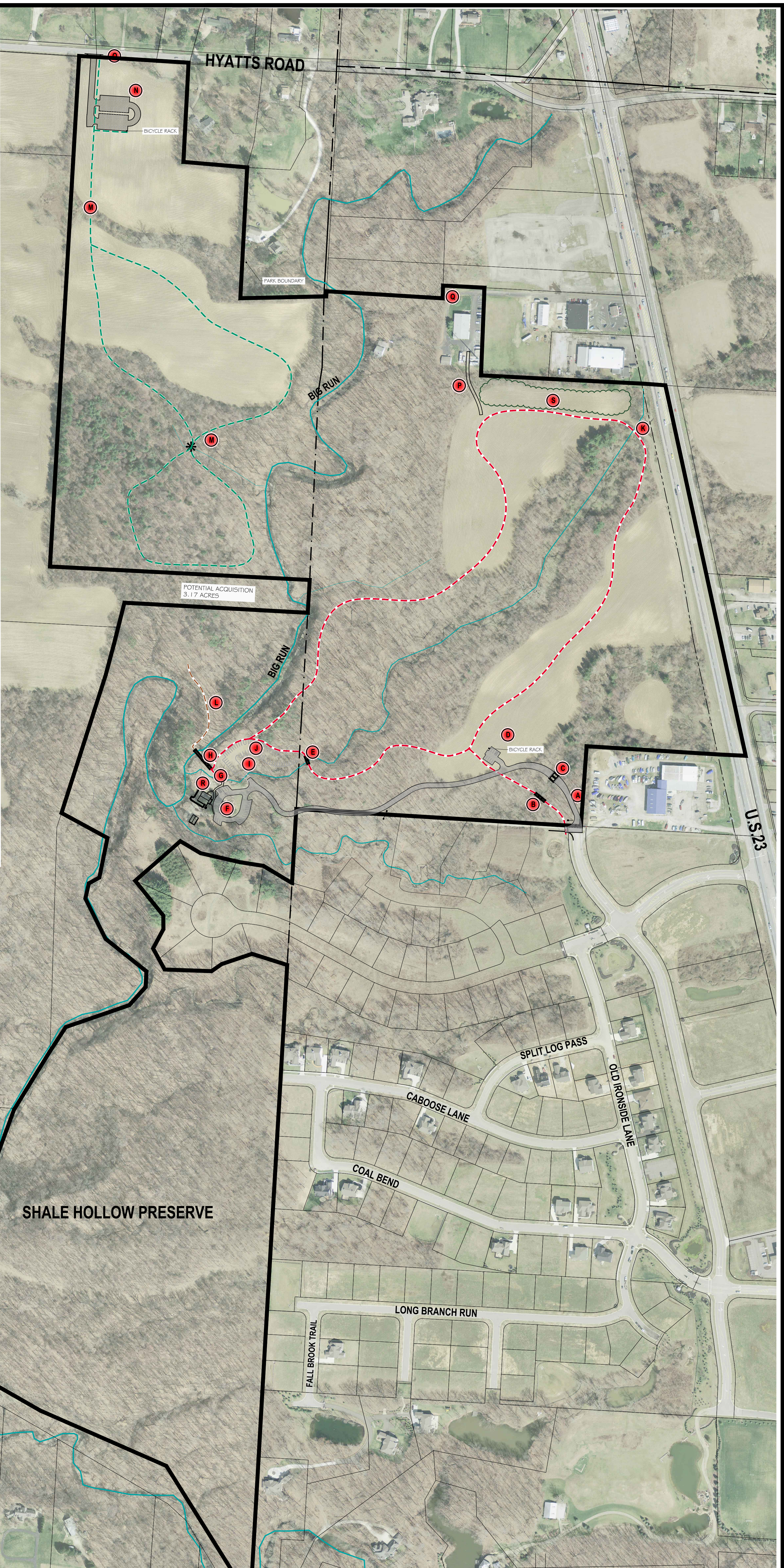
**KEY:**

- A** MAIN PARK ENTRANCE OFF ARTESIAN RUN
- B** PEDESTRIAN BRIDGE FOR TRAIL  
(ORANGE TWP-SOUTH-PEDESTRIAN BRIDGE)
- C** NEW VEHICULAR BRIDGE-TWO WAY TRAFFIC
- D** PUBLIC PARKING (10 VEHICLES) AND FUTURE EXPANDED PARKING, SHELTERS & RESTROOM
- E** PEDESTRIAN BRIDGE  
(ORANGE TWP-WEST-PEDESTRIAN BRIDGE)
- F** DROP-OFF AND ACCESSIBLE PARKING (20 SPACES)
- G** PEDESTRIAN BRIDGE  
(LODGE BRIDGE)
- H** PEDESTRIAN BRIDGE-CONTINENTAL BRIDGE AND RAMP  
(BIG RUN SOUTH BRIDGE)
- I** VEHICULAR BRIDGE
- J** FUTURE PARKING-PHASE II (AS NEEDED)
- K** CULVERT CROSSING FOR TRAIL
- L** UNIMPROVED TRAIL (Alignment to be determined)
- M** FUTURE PEDESTRIAN BRIDGE  
(LIBERTY TWP-NORTH-PEDESTRIAN BRIDGE)
- N** FUTURE HYATTS ROAD PARKING AND SHELTER - PHASE II
- O** FUTURE HYATTS ROAD ENTRANCE- PHASE II
- P** MAINTENANCE DRIVE & CULVERT  
(ORANGE TWP-NORTH-VEHICULAR BRIDGE - MAINT. ONLY)
- Q** NEW SOUTHZONE HQ / PARK POLICE HQ
- R** RENOVATED RESTROOM/NATURE CENTER/CLASSROOM
- S** EVERGREEN SCREEN, PLANTED IN UNEVEN SPACING TO SCREEN COMMERCIAL AREA

**LEGEND:**

-  8' FOOT WIDE GRAVEL TRAIL
-  FUTURE 8' FOOT WIDE GRAVEL TRAIL
-  UNIMPROVED TRAILS

BICYCLES ARE LIMITED TO THE FIRST PARKING LOT OF ARTESIAN RUN AT THE SOUTH END AND THE FIRST PARKING LOT OFF HYATTS ROAD AT THE NORTH. BICYCLE RACKS WILL BE PROVIDED AT THESE LOCATIONS FOR PARK USERS TO SECURE THEIR BICYCLES AND WALK IN THE PARK.



**SHALE HOLLOW PRESERVE**  
 6320 ARTESIAN RUN  
 DELAWARE, OH 43015  
**MASTER PLAN**

DATE: AUGUST 2013  
 SHEET SIZE: 24 x 36

SCALE: 1"=200'

NORTH

